

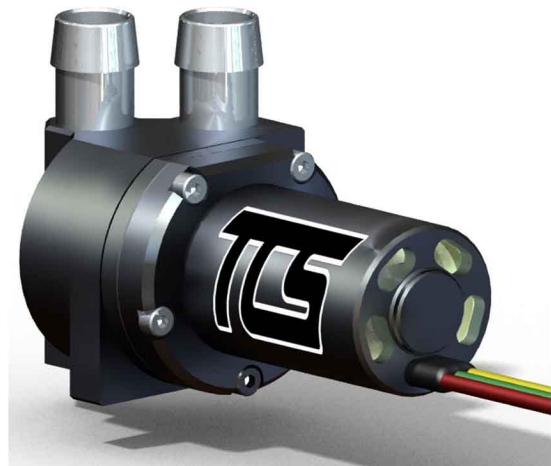
## Micro Centrifugal Liquid Pump Range

### Overview

The M500 series range of pumps are driven by powerful brushless drive motors and can deliver unparalleled flow for their size. Constructed from precision CNC machined aluminium alloy with stainless steel tubing connectors and fitted with PTFE seals as standard. Alternative optional wetted part coatings and materials are also available enabling this pump range to resist most chemicals and solvents. The pump uses efficient push fit connectors designed for 8.0mm flexible tubing.

### Features

- CNC aluminum alloy construction
- Quiet pulseless smooth flow
- Small size only 62 x 32 x 30mm
- Weight 70g
- Free flow up to 4500ml per minute (water)
- Wide range of chemical resistance



### Performance

- Flow : free-flow  
0 - 4500 ml/min
- Pressure : maximum  
1000 mBar (14.5psi)
- Voltage range  
6 - 24 Vdc

